

# Testing – 6.2 Informal tests

Michel Bierlaire

*Solution to the practice quiz*

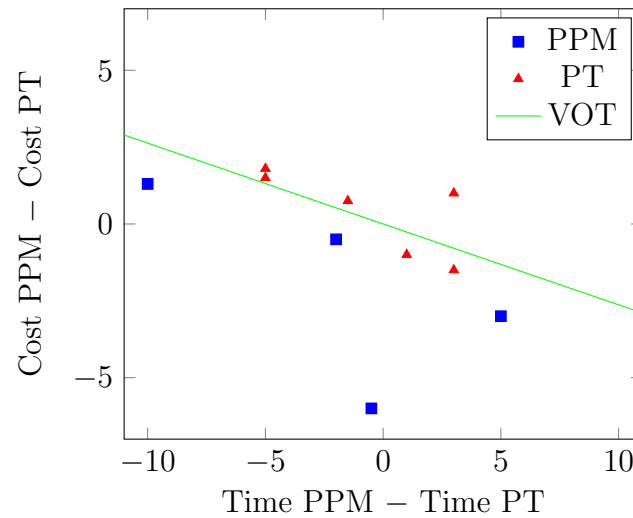
1. The value of time in [CHF/minute] is

$$\text{VOT} = \frac{-\beta_t}{-\beta_c} = \frac{0.363}{1.38} = 0.263 \text{ [CHF/min]}$$

and to obtain it in [CHF/h] we need to multiply it by 60, so

$$\text{VOT} = 15.78 \text{ [CHF/h]}$$

This value is lower than the value reported in the literature, but the level of magnitude is similar, which is acceptable.



2. The plot is:

Note that, due to the presence of the error terms, the indifference line does not separate exactly the PPM observations from the PT.

3. The slope is the value of time.